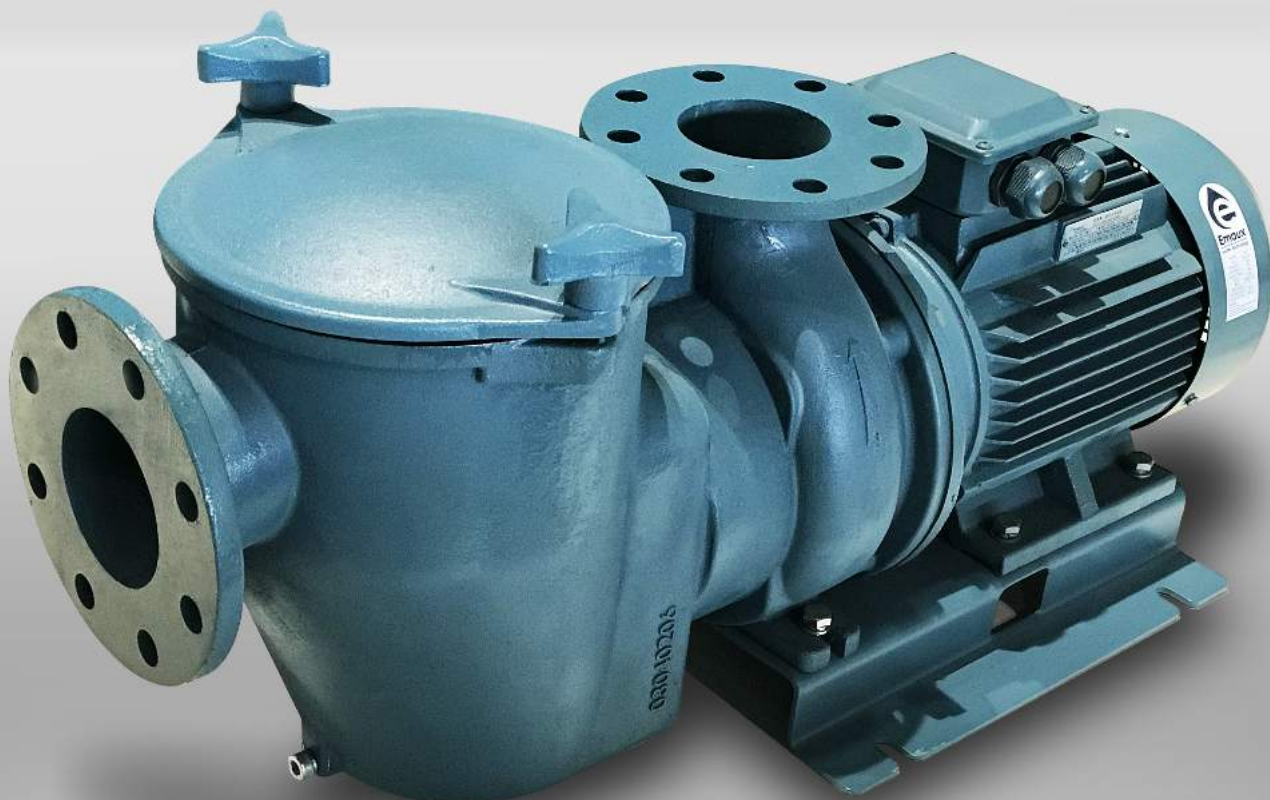


# Commercial Pump SE SERIES

CATER FOR HEAVY DUTY APPLICATIONS

For fresh water commercial pools



## Product Features

1. Cast iron body with AISI-304 S.S. basket
2. AISI-304 S.S. or Cast iron Impellers are optional to match your need.
3. Asynchronous, Two poles motor
4. Class insulation: 130(B)
5. IPX5 Waterproof standard
6. Built-in thermal protection
7. Overload protection
8. Available in 380V/50Hz
9. Testing Pressure 50PSI (3.5 Bar)
10. Basket Volume 5 litres

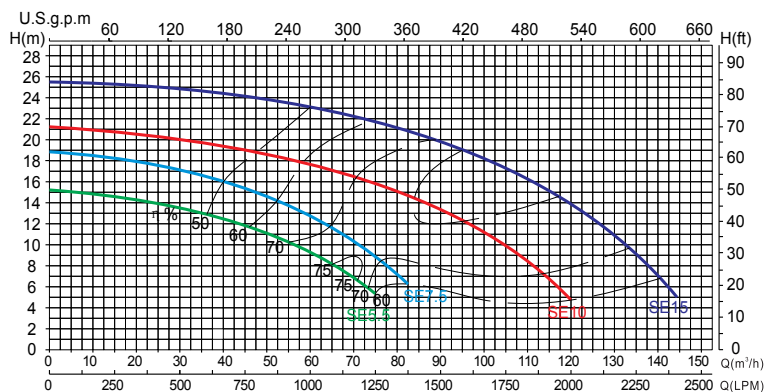


**Pool & Spa Equipment**

[www.emauxgroup.com](http://www.emauxgroup.com)

# SE Series Commercial Pump

## Technical Information:

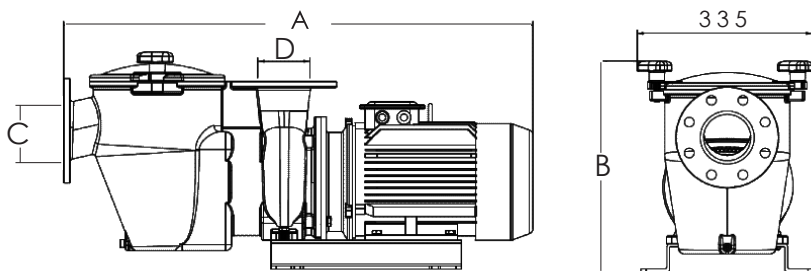


Remark: The performance curve above is for 50Hz models



AISI-304 Stainless Steel Impeller

## Product Information and Dimension:



SE Commercial Pump is designed for large swimming pools, spa pools and water features

Model 50Hz	Input (kW)	Current (AMP)	Noise (dB)	Head (m)					
				8	10	12	14	16	18
SE5.5	4.70	7	72	65	55	42.5	25	--	--
SE7.5	6.40	9	76	77.5	71	62.5	52.5	40	20
SE10	8.60	14	75	111.5	104	97	85	75	55
SE15	12.40	18	78	137.5	132.5	126.5	120	110	101

Code 380V/50Hz	Model	Connection Size	Horsepower	Output power (kW)	Voltage	Weight(kg)	A mm	B mm	C mm	D mm
88026816	SE5.5	3" / 90mm	5.5hp	4.0	380-420	95	860	415	DN80	DN80
88026811	SE7.5	3" / 90mm	7.5hp	5.5	380-420	100	860	415	DN80	DN80
88026812	SE10	4" / 110mm	10hp	7.5	380-420	118	915	445	DN100	DN100
88026813	SE15	4" / 110mm	15hp	11.0	380-420	130	945	445	DN100	DN100

## EMAUX WATER TECHNOLOGY CO., LTD

ADDRESS G/F 41 TIN HAU TEMPLE ROAD,  
NORTH POINT, HONG KONG  
PHONE +852 2832 9880  
www.emauxgroup.com

Pool & Spa Equipment

STRIVE FOR CLEAR WATER

### Available from:

ALL SPECIFICATIONS ARE SUBJECT TO CHANGE WITHOUT NOTICE  
© 2018 EMAUX WATER TECHNOLOGY CO., LTD. ALL RIGHTS RESERVED.